

C o m  
p o s  
i t e



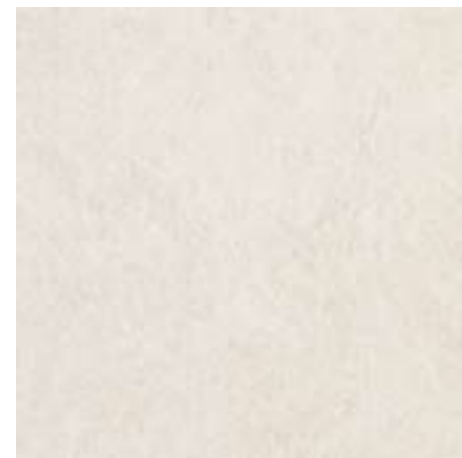
Maxxi



MAXXI Grey 45x45 (18"x18") R - Mosaico Grey 30x30 (12"x12")

\* La lista aggiornata dei colori certificati Ecolabel è disponibile su [www.refin.it](http://www.refin.it) - The updated list of Ecolabel-certified colours is available at [www.refin.it](http://www.refin.it) -  
La liste actualisée des couleurs certifiées Ecolabel est disponible sur [www.refin.it](http://www.refin.it) - Die aktuelle Liste der Ecolabel-zertifizierten Farben steht auf [www.refin.it](http://www.refin.it) zur  
Verfügung - De bijgewerkte lijst met Ecolabel-kleuren is beschikbaar op [www.refin.it](http://www.refin.it) - Текущий перечень цветовых оттенков, сертифицированных по стандарту Ecolabel,  
приведен на сайте [www.refin.it](http://www.refin.it)

MAXXI WHITE



30x60 (12"x24") R	<b>IQ18</b>	<b>103</b>
45x45 (18"x18")	<b>GD10</b>	<b>71</b>
45x45 (18"x18") GRIP	<b>GD83</b>	<b>77</b>
44,5x44,5 (18"x18") R	<b>GN73</b>	<b>90/2</b>

MAXXI BEIGE



30x60 (12"x24") R	<b>IQ14</b>	<b>97</b>
45x45 (18"x18")	<b>GD15</b>	<b>60/2</b>
45x45 (18"x18") GRIP	<b>GD80</b>	<b>65</b>
44,5x44,5 (18"x18") R	<b>GN69</b>	<b>77</b>

MAXXI SILVER



30x60 (12"x24") R	<b>IQ17</b>	<b>97</b>
45x45 (18"x18")	<b>GD11</b>	<b>60/2</b>
45x45 (18"x18") GRIP	<b>GD84</b>	<b>65</b>
44,5x44,5 (18"x18") R	<b>GN72</b>	<b>77</b>

MAXXI MOSAICO WHITE



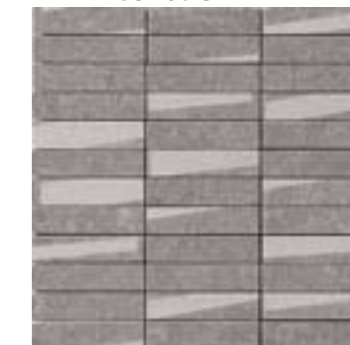
30x30 (12"x12") **HG29** **183**

MAXXI MOSAICO BEIGE



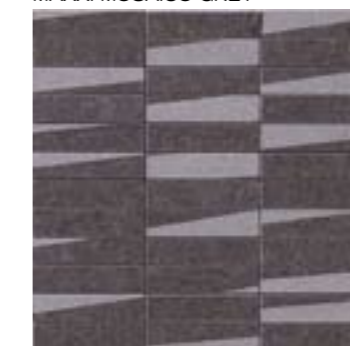
30x30 (12"x12") **HG25** **183**

MAXXI MOSAICO SILVER



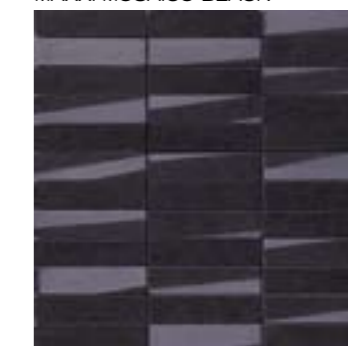
30x30 (12"x12") **HG28** **183**

MAXXI MOSAICO GREY



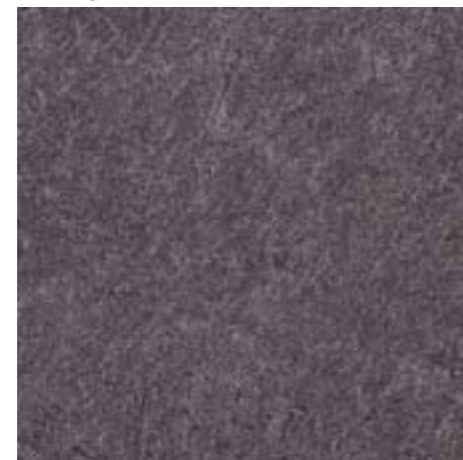
30x30 (12"x12") **HG27** **183**

MAXXI MOSAICO BLACK



30x30 (12"x12") **HG26** **186**

MAXXI GREY



30x60 (12"x24") R	<b>IP47</b>	<b>97</b>
45x45 (18"x18")	<b>GD09</b>	<b>60/2</b>
45x45 (18"x18") GRIP	<b>GD82</b>	<b>65</b>
44,5x44,5 (18"x18") R	<b>GN71</b>	<b>77</b>

MAXXI BLACK



30x60 (12"x24") R	<b>IP48</b>	<b>103</b>
45x45 (18"x18")	<b>GD08</b>	<b>71</b>
45x45 (18"x18") GRIP	<b>GD81</b>	<b>77</b>
44,5x44,5 (18"x18") R	<b>GN70</b>	<b>90/2</b>

Esterno - Exterior - Extérieur - Aussenanwendung - Extern - Ст уқты ный для на ужной укладки



EKO-LOGIC Grigio Grip 45x45 (18"x18")

▽ 9,5 mm



30x60 (12"x24")

▽ 9,5 mm



44,5x44,5 (18"x18")

▽ 9,5 mm



45x45 (18"x18") GRIP (R11, A+B+C)

▽ 9,5 mm



44,5x44,5 (18"x18")

▽ 9,5 mm



30x30 (12"x12") Mosaico

Pezzi speciali - Trim tiles - Pieces speciales - Formteile - Speciale delen - Спецц аьные з ементы



**Battiscopa R**  
10x60 (4"x24")

BEIGE	HG05	36	●
BLACK	HG06	41	●
GREY	HG07	36	●
SILVER	HG08	36	●
WHITE	HG09	41	●

**Battiscopa**  
8,5x45 (3"x18")

BEIGE	HG45	21	●
BLACK	HG46	25	●
GREY	HG47	21	●
SILVER	HG48	21	●
WHITE	HG49	25	●

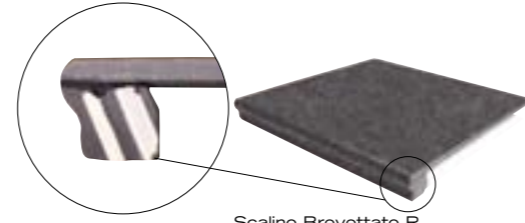
**Battiscopa R**  
8,5x44,5 (3"x18")

BEIGE	HF32	34	●
BLACK	HF33	39	●
GREY	HF34	34	●
SILVER	HF35	34	●
WHITE	HF36	39	●



**\*Scalino Brevettato R**  
30x60 (12"x24")

BEIGE	HI45	124	▲
BLACK	HI46	124	▲
GREY	HI47	124	▲
SILVER	HI48	124	▲
WHITE	HI49	124	▲

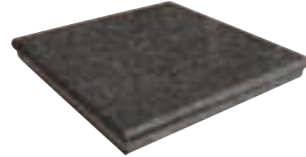


**Scalino Brevettato R**  
44,5x44,5 (18"x18")

BEIGE	HI50	85	▲
BLACK	HI51	85	▲
GREY	HI52	85	▲
SILVER	HI53	85	▲
WHITE	HI54	85	▲

**\*Scalino Brevettato R**  
30x30 (12"x12")

BEIGE	HI35	54	▲
BLACK	HI36	54	▲
GREY	HI37	54	▲
SILVER	HI38	54	▲
WHITE	HI39	54	▲

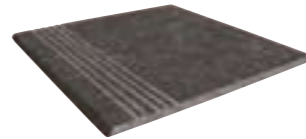


**Ang. Scalino Brev. R**  
44,5x44,5 (18"x18")

BEIGE	HI55	135	▲
BLACK	HI56	135	▲
GREY	HI57	135	▲
SILVER	HI58	135	▲
WHITE	HI59	135	▲

**\*Ang. Scalino Brev. R**  
30x30 (12"x12")

BEIGE	HI40	143	▲
BLACK	HI41	143	▲
GREY	HI42	143	▲
SILVER	HI43	143	▲
WHITE	HI44	143	▲



**Gradino Industriale**  
45x45 (18"x18")

BEIGE	HI60	22	▲
BLACK	HI61	23	▲
GREY	HI62	23	▲
SILVER	HI63	21	▲
WHITE	HI64	23	▲



MAXXI Black 30x60 (12"x24") R - White 30x60 (12"x24") R

\* Appoggio utile 26,5 cm - Useful support 26,5 cm - Appui utile 26,5 cm - Aufliegende Fläche 26,5 cm. - Nuttige steun 26,5 cm - полезная площадь ступени 26,5 cm